

Main Specifications

▼ **Pressure connection**
 Material: SS304
 M20 x 1.5, G1/2" , M14x1.5,
 G1/4" (M), G1/4" (F)
 1/2" NPT, 1/4" NPT, 1/4" PT

▼ **Electrical connector**
 Hirschmann connector /
 Hirschmann with cable outlet /
 Cable outlet / Packard /
 BP3 aluminum case /
 Aviation plug

▼ **Sealing O-ring**
 NBR

▼ **Pressure range**
 -100kPa...0~10kPa...100MPa

▼ **Pressure type**
 Gauge pressure /
 Sealed pressure /
 Absolute pressure /
 Compound pressure

▼ **Applicable fluid**
 Liquid and gas that compatible
 with SS304

▼ **Ambient temperature**
 -20 to 85°C

▼ **Storage temperature**
 -40 to 125°C

▼ **Vibration resistance test**
 20g (20-5000Hz)

▼ **Impact resistance test**
 100g (11ms)

▼ **Protection level**
 IP 54 (Hirschmann connector)
 IP 65 (Packard, aluminum case)
 IP 67 (Aviation plug, cable outlet)

▼ **Explosion-proof class (option)**
 Exia II CT6

Other Specifications

▼ **Case**
 Stainless steel

▼ **Power supply**
 24VDC / 12VDC

▼ **Output signal**
 4~20mA
 1~5V
 0~5V
 0~10V
 0.5~4.5V

▼ **Measuring elements**
 Diffusion silicone chip
 Transducer
 Material: SS316L

▼ **Zero & span drift**
 ±1.5% F.S. max (@-10~70°C)

▼ **Accuracy**
 0.5% F.S. (standard) /
 0.3% F.S. (option) /
 0.1% F.S. (option)

▼ **Stability**
 ±0.2% F.S. /year

▼ **Response time**
 ≤1ms
 (pressure increase to 90%F.S.)

▼ **Insulation resistance**
 100MΩ, 250VDC

▼ **Temperature compensation**
 -10 to 70°C /
 -20 to 85°C (option)

▼ **Overpressure**
 1.5*F.S.

▼ **EMC surge**
 (IEC61000-4-5) 2KV

▼ **EMC discharge**
 (IEC61000-4-2)
 Contact discharge 8KV
 Air discharge 15KV

Pressure Transmitter
 (General Type)
 Model: PT-VP
 Introduction

PT-VP Pressure Transmitter adopts diffusion silicon chip as pressure sensor. The in-built process circuit transform mV signal to standard voltage and current output, which is suitable for using with computer, control equipment and display unit.



Due to the variety of customization, the picture is only for reference, please confirm the actual item with our sales. (If there is any change on specification, please take the latest version as standard.)

Features

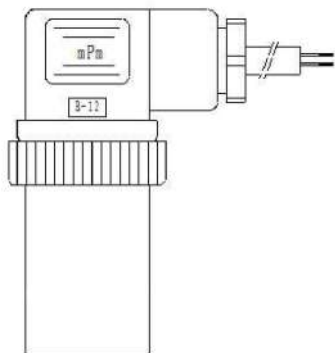
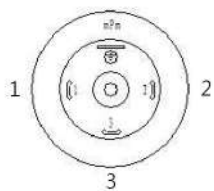
- OEM service
- All stainless steel integrated design with easy installation features, suitable for long term use in hazardous environment
- Various electrical connectors and thread types for selection
- Wide measurement range: -100kPa...0~10kPa...100MPa
- Anti-vibration, anti-impact, and anti-corrosive
- High interference with long term stability
- Zero and span field calibration



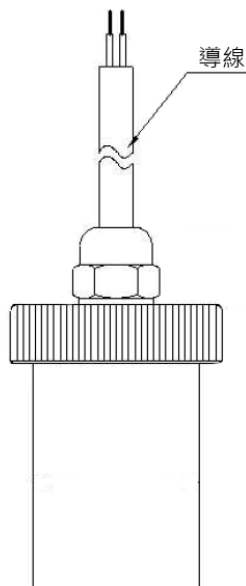
Typical measurement scale table

Gauge pressure		Sealed gauge pressure		Compound pressure		Absolute pressure	
Code	Range	Code	Range	Code	Range	Code	Range
G1	-100kPa~0	S1	0~10MPa	C1	-100kPa~0~100kPa	A1	0~0.1MPa
G2	0~10kPa	S2	0~20MPa	C2	-100kPa~0~200kPa	A2	0~0.2MPa
G3	0~20kPa	S3	0~25MPa	C3	-100kPa~0~500kPa	AO	Others
G4	0~50kPa	S4	0~40MPa	C4	-100kPa~0~1MPa		
G5	0~100kPa	S5	0~60MPa	C5	-100kPa~0~2MPa		
G6	0~200kPa	S6	0~80MPa	C6	-100kPa~0~5MPa		
G7	0~500kPa	S7	0~100MPa	C7	-100kPa~0~10MPa		
G8	0~1MPa	SO	Others	CO	Others		
G9	0~2MPa						
G10	0~5MPa						
GO	Others						

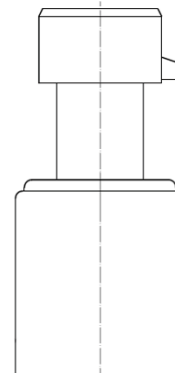
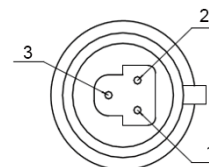
Electrical Connectors Dimension



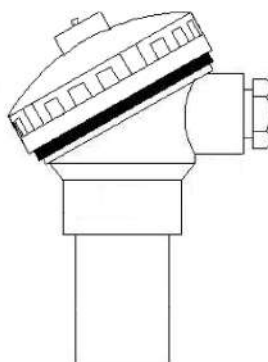
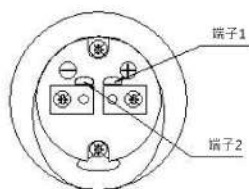
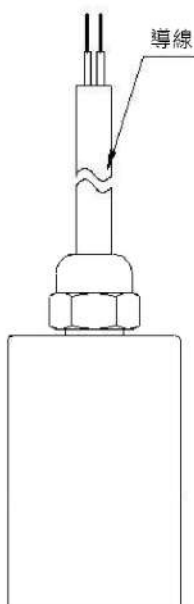
Hirschmann connector		
Current (two-wire)	Pin1	Power supply (+)
	Pin2	Current output
Voltage (three-wire)	Pin1	Power supply (+)
	Pin2	COM
	Pin3	Voltage output



Hirschmann with cable outlet		
Current (two-wire)	RED	Power supply (+)
	GREEN	Current output
Voltage (three-wire)	RED	Power supply (+)
	BLUE	COM
	YELLOW	Voltage output

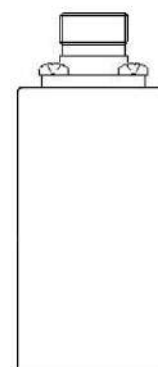
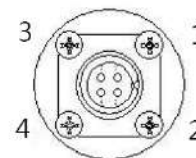


Packard connector		
Current (two-wire)	Pin1	Power supply (+)
	Pin2	Current output
Voltage (three-wire)	Pin1	Power supply (+)
	Pin2	COM
	Pin3	Voltage output



Cable outlet		
Current (two-wire)	RED	Power supply (+)
	GREEN	Current output
Voltage (three-wire)	RED	Power supply (+)
	BLUE	COM
	YELLOW	Voltage output

BP3 aluminum case		
Current (two-wire)	Terminal 1	24VDC
	Terminal 2	Current output



Aviation plug		
Current (two-wire)	Pin1	Power supply (+)
	Pin2	Current output
Voltage (three-wire)	Pin1	Power supply (+)
	Pin2	COM
	Pin3	Voltage output

How to order

PT-VP		Pressure transmitter (general type)					
Code		Pressure connection					
4N		1/2" NPT					
2N		1/4" NPT					
2P		PT1/4"					
2GM		G1/4" (male)					
2GF		G1/4" (female)					
4G		G1/2"					
M20		M20x1.5					
M14		M14x1.5					
Code		Pressure measurement range and pressure type					
G8		Please refer to typical measurement scale table and select code					
Code		Electrical connector					
H		Hirschmann connector					
HC		Hirschmann with cable outlet					
C		Cable outlet					
P		Packard connector					
AC		BP3 aluminum case					
A		Aviation plug					
Code		Output signal					
S1		4-20mA					
S2		0-20mA					
S3		1 to 5V					
S4		0 to 5V					
S5		0 to 10V					
S6		0.5~4.5V					
Code		Accuracy					
A		0.1%					
B		0.3%					
C		0.5%					
Code		Power supply					
24V		24VDC					
12V		12VDC					
Code		Other requests					
/A		Third party notarized document					
/B		Inspection report					
/C		Tag					
/D		Install a display unit					
/E		Explosion-proof + certificate					
/F		Temperature compensation: -20 to 85°C					
/G		Add cable length (standard 1.5m)					
/H		Adapt the other kind of threads					
PT-VP	4N	G8	H	S1	C	24V	Order example: PT-VP-4N-G8-H-S1-C-24V