

**Main Specification**

▼ **Gauge size**  
4" , 6"

▼ **Installation type**  
Back mount w/ flange (MS-FTFF)  
Wall mount w/ flange (MS-FTWF)

▼ **Window**  
Glass  
Option: safety glass

▼ **Process connection**  
Material: SS304  
Thread size: 1/4" , 3/8" , 1/2"  
Thread type: NPT, PF  
Other thread type and material available upon request

▼ **Stem**  
Material: SS304  
Outer dia.: Ø6 / 8 / 10 / 12 mm  
Length: please refer to stem specification table

▼ **Capillary**  
Fluid-in-capillary: gas or liquid  
Length:  
Liquid-filled - 10M  
Gas-filled - 10M  
(Max. length 50M)

▼ **Temperature range**  
Min.: -200°C  
Max.: +600°C

▼ **Ambient temperature**  
-20 to +70°C

▼ **Applicable fluid**  
Liquid and gas that compatible with connection's material

▼ **Protection level**  
IP 65

**Other Specification**

▼ **Ring**  
Stainless steel

▼ **Case**  
SS304

▼ **Switch contact type**  
Single pole double throw SPDT

▼ **Operating voltage**  
250 VAC max.  
28 VDC max.

▼ **Contact rating**  
AC: 5A max.  
DC: 5A max. (ohmic load)  
3A max. (inductive load)

▼ **Contact material**  
Pure silver 999.9

▼ **Contact number**  
SPDT x1 / SPDT x2

▼ **Pointer**  
Aluminum with black enamel

▼ **Dial face**  
All black scale on whiteboard

▼ **Measuring elements**  
Gas-actuated (standard)  
Liquid-actuated (option)

▼ **Gauge accuracy**  
±1%

▼ **Switch action**  
±2%

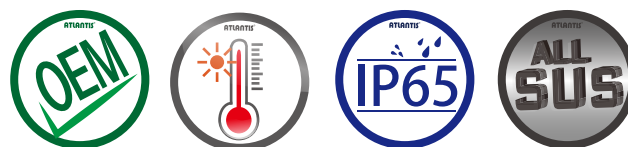
▼ **Max operating temperature**  
1.3°F.S.

# Remote Reading Thermometer with Electrical Contact (Micro Switch Type) Model: MS-FT Series Introduction

MS-FT series remote reading thermometer with micro switch, features high contact rating 5A, which is suitable for temperature control in high current environment.



**MS-FTFF Panel Mounting w/ flange**



Due to the variety of customization, the picture is only for reference, please confirm the actual item with our sales. (If there is any change on specification, please take the latest version as standard.)

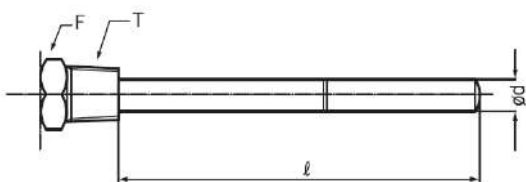
## Features

- OEM service
- Adopts SPDT micro switch, max. contact rating 5A, suitable for high current environment
- Capillary installed, suitable for remote temperature measurement
- Gauge all stainless steel design
- Accuracy ±1%F.S.
- Contact number SPDTx1 / SPDTx2
- Media-actuated measurement ensuring the fastest reaction to ambient temperature

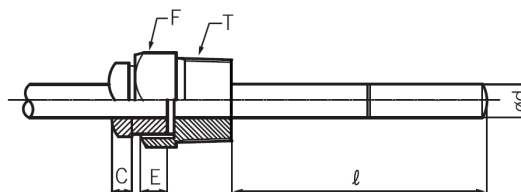


**MS-FTWF Wall Mounting w/ flange**

### Connection type

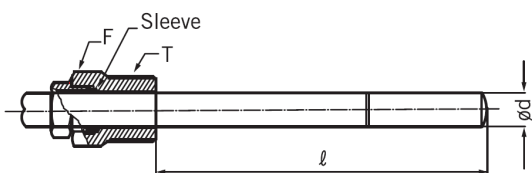


(A) Fixed thread type



(B) Rotary thread type (male thread)

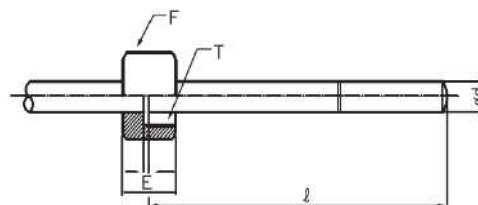
(the male thread position is fixed, the rotatable angle is 360 degree)



(C) Slide thread type

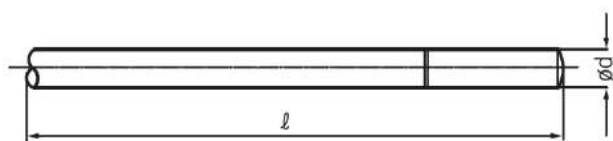
L (stem length) is customized.

The slide thread can be moved up and down, and the length of sensor can be adjusted by user.



(D) Rotary thread type (female thread)

(the female thread position is fixed, the rotatable angle is 360 degree)



(E) Non-thread type

Note:

T – Process connection

E – stop plate for (B) and (D) type

F – Hex head

L – Stem length

D – Stem outer diameter

### Temp range and stem specification (Liquid-filled type)

Temp range (°C)	Min. scale division(°C)	Min. stem insertion length			
		Stem outer diameter			
		Ø6	Ø8	Ø10	Ø12
-70~+50°C	2	—	90	80	80
~50~+50°C	1	—	100	90	90
-30~+50°C	1	205	110	90	90
-30~+100°C	2	130	90	80	80
-10~+50°C	1	270	120	110	110
-10~+100°C	2	155	90	80	80
0~50°C	1	325	140	120	120
0~80°C	1	205	110	90	90
0~100°C	1	165	100	90	90
0~120°C	2	140	90	80	80
0~150°C	2	115	80	70	70
0~200°C	2	90	90	70	70
0~250°C	5	75	80	70	70
0~300°C	5	65	80	70	60
0~400°C	5	50	70	60	60

Note:

Special range / scale / stem diameter/ length are available upon request.

### Temp range and stem specification (Gas-filled type)

Temp range (°C)	Min. scale division(°C)	Min. stem insertion length	
		Stem outer dia.	
		Ø10	Ø12
-200~+50°C	5	270	200
-200~+100°C	5		
-200~+150°C	5		
-200~+200°C	5		
-100~+100°C	2		
-100~+150°C	5		
-100~+200°C	5		
-50~+300°C	5		
-50~+400°C	5		
-50~+500°C	10		
+50~+600°C	10		
0~400°C	5		
0~500°C	10		
0~600°C	10		

## How to order

Remote Reading Thermometer with Electrical Contact (Micro Switch Type) MS-FT series										
Std.	Spec.	Code	Item	Code	Item	Code	Item	Code	Item	
MS-FTFF	Installation type	MS-FTFF	Back mount with flange	MS-FTWF	Wall mount with flange	–	–	–	–	
04	Gauge size	04	4"	06	6"	–	–	–	–	
4	Thread size	2	1/4"	3	3/8"	4	1/2"	–	–	
N	Thread type	N	NPT	F	PF	O	Others	–	–	
A	Connection type	A	Fixed thread	B	Rotary type (male thread)	C	Slide thread	D	Rotary type (female thread)	
		E	Non-thread	–	–	–	–	–	–	
1	Contact number	1	SPDTx1	2	SPDTx2	–	–	–	–	
304	Stem material	304	SS304	O	Others	–	–	–	–	
Custom	Stem outer diameter	6 / 8 / 10 / 12 mm Other stem outer diameter available upon request								
Custom	Stem length	Please refer to stem specification table The specified stem length cannot over minimum stem length listed in the table.								
304	Capillary material	304	SS304	O	Others	–	–	–	–	
Custom	Capillary length	Standard: 10M Other capillary length available upon request (max.50M)								
Custom	Temp. range	-200 to 650°C								
A	Measuring elements	A	Gas-actuated	L	Liquid-actuated	–	–	–	–	
/D	Other requests	/A	Third party notarized documents			/B	Inspection report			
		/C	Tag			/D	Customized dial face (scale, color, unit, etc.)			
		/E	Thermowell (thermowell specifications are customized according to the selected stem specifications)			/F	Remove external adjustable screw			
		/G	Remove anti-sway pointer (better sensibility)			/H	IP67 (sealed with silicone rubber O-ring)			
		/I	Epoxy coating capillary			–	–			

Order example: MS-FTFF - 04 - 4 - N - A - 1 - 304 - 12mm - 150mm - 304 - 10M - (0 to 100°C) - A + /D