

Main Specifications

▼ **Pressure connection**
Flush diaphragm connection
Material: SS316L
Specification:
2" / 2.5" Clamp

▼ **Electrical connector**
Hirschmann connector /
2088 housing

▼ **Pressure range**
-100...0~10kPa...10MPa
Please refer to pressure range
table

▼ **Pressure type**
Gauge pressure /
Absolute pressure /
Sealed pressure

▼ **Applicable media**
Corrosive / viscous fluid that
compatible with SS316L

▼ **Operating temperature**
Normal Type ▼
-40 to 85°C
With cooling fin Type (Three
pieces) ▼
-40 to 150°C
With cooling fin Type (Five
pieces) ▼
-40 to 250°C

▼ **Storage temperature**
-40 to 85°C

▼ **Protection level**
IP65

Other specifications

▼ **Case material**
SS304

▼ **Clamp material**
SS316L

▼ **Diaphragm material**
SS316L

▼ **Output signal**
2-wire: 4~20mA
3-wire: 0-5V / 0-10V / 1-5V

▼ **Power supply**
2-wire: 12 ~ 30VDC
3-wire: 12~24VDC

▼ **Accuracy**
±0.5%F.S.

▼ **Zero drift**
±1.5%F.S. (@-20 to 85°C)

▼ **Hysteresis and Repeatability**
±0.1%F.S.

▼ **Insulation**
100MΩ / 250VDC

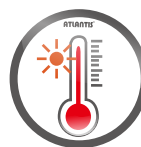
▼ **Response time**
≤1ms (increasing to 90%F.S.)

▼ **Service life**
≥10*10⁶ pressure cycle

▼ **Vibration resistance**
20g (25Hz~2kHz)

Clamped Flush Diaphragm Pressure Transmitter Model: FDPT-500 Series Introduction

FDPT-500 adopts a piezoresistive silicon pressure sensor with the flush diaphragm as its measuring elements. The blind space has been eliminated to prevent impurity or viscosity generated. The features make FDPT-500 transmitter suitable for the sanitary required environment such as food, pharmaceuticals, and wine industry.



Due to the variety of customization, the picture is only for reference, please confirm the actual item with our sales. (If there is any change on specification, please take the latest version as standard.)



2088 housing

Features

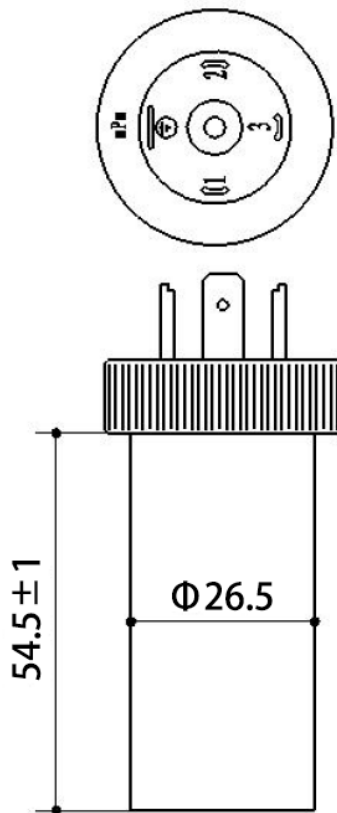
- OEM service
- The flush diaphragm connection design can prevent impurity generated
- Specially designed for high sanitary requirement
- Integrated stainless steel structure
- Compact design, easy installation
- High anti-impact and anti-vibration performance
- Various output signals for selection

Pressure range table

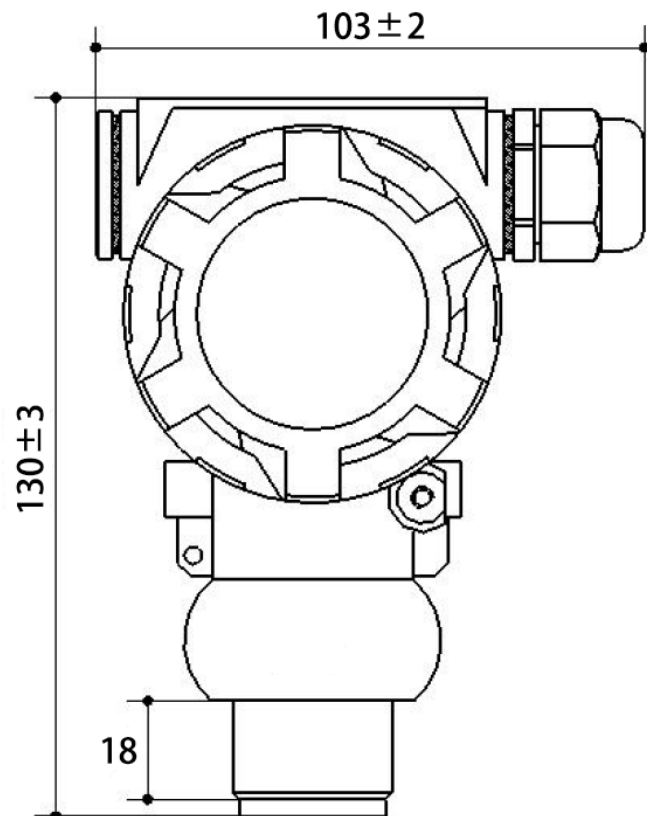
Code	Pressure Type	Pressure Range	Overload Pressure	Burst Pressure
10K	G	0~10 kPa	300%F.S	500%F.S
20K	G	0~20 kPa	300%F.S	500%F.S
35K	G	0~35 kPa	300%F.S	500%F.S
70K	G	0~70 kPa	300%F.S	500%F.S
100K	G、A	0~100 kPa	200%F.S	300%F.S
250K	G	0~250 kPa	200%F.S	300%F.S
400K	G	0~400 kPa	200%F.S	300%F.S
600K	G	0~600 kPa	200%F.S	300%F.S
1M	G	0~1 MPa	200%F.S	300%F.S
1.6M	G、S	0~1.6 MPa	200%F.S	300%F.S
2.5M	G、S	0~2.5 MPa	200%F.S	300%F.S
6M	S	0~6 MPa	150%F.S	300%F.S
10M	S	0~10 MPa	150%F.S	300%F.S

G : Gauge pressure A : Absolute pressure S : Sealed pressure

Dimension (mm)

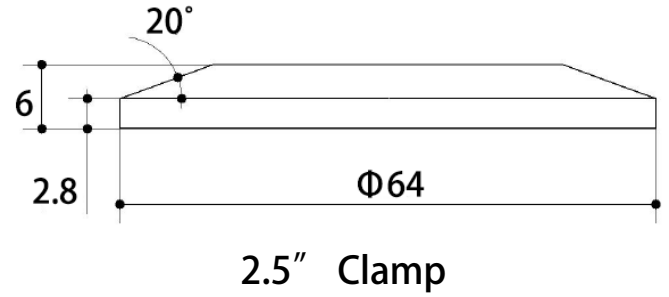
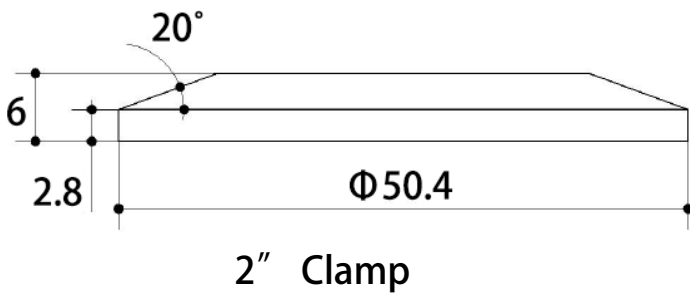


Hirschmann

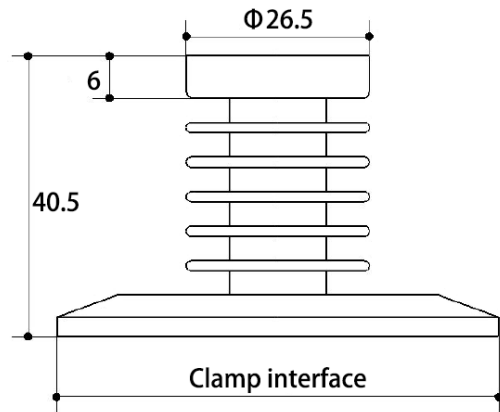
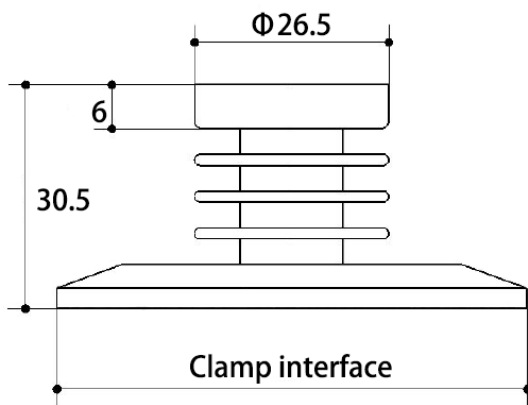


2088 housing

Clamp dimension (mm)



Cooling fin dimension



How to order

FDPT-500 Series Clamped Flush Diaphragm Pressure Transmitter									
Std.	Spec.	Code	Item	Code	Item	Code	Item	Code	Item
G	Pressure type	G	Gauge pressure	A	Absolute pressure	S	Sealed pressure	-	-
25C	Pressure connection	2C	2" Clamp	25C	2.5" Clamp	-	-	-	-
H	Electrical connector	H	Hirschmann connect	2088	2088 housing	-	-	-	-
250K	Pressure range	Please refer to Pressure Range and select corresponding code							
mA	Output signal	mA	4-20mA	1V	0-5V	2V	0-10V	3V	1-5V
3	cooling fin	N	NO	3	Three pieces	5	Five pieces	-	-
/B	Other requests	/A	Third party notarized document						
		/B	Inspection report (issued by Re-Atlantis)						
		/C	Tag						

Order example: FDPT-500 - G - 25C - H - 250K - mA - 3 - /B