

Main Specifications

▼Type

Standard / Vibration-proof
(Insulation oil filling in pressure gauge)

▼Installation type

Bottom mount

▼Pressure gauge size

4" , 6"

▼Diaphragm seal

Diameter: 160mm

Housing:

SS304 / SS316 / SS316L

▼Window

Safety glass /

Organic glass (option)

▼Pressure connection

Size: 1/4" , 3/8" , 1/2"

Type: BSPT, NPT, PF

Material: SS304

Other thread specifications are available upon request

▼Pressure range

Positive pressure:

0...4 to 2500 kPa

Vacuum pressure:

-100 to -4...0 kPa and other

compound ranges

▼Applicable fluid

Liquid and gas that compatible with connection's material

▼Ambient temperature

-40°C to +70°C (Standard)

-20°C to +60°C(Oil-filling type)

▼Fluid temperature

+60°C

▼Protection level

Standard: IP54

Pressure gauge with oil filling:

IP65

Other Specifications

▼Case

SS304

▼Pointer

Aluminum with black enamel

▼Dial face

All black scale

▼Measuring elements

Diaphragm

Material: SS316L (Standard)

Option: PTFE coating

Other special materials

available upon requests

▼Movement

Stainless steel

▼Accuracy

4" : ±1.6%, ±2.5%

6" : ±1.6%

▼Set point accuracy

±4%

▼Contact points

1 or 2 contact(s)

▼Contact material

> 110V (80% Silver, 20%

Nickel, 10µm Gold plating)

≤ 36V Gold

▼Maximum operating voltage

380V AC or 220V DC

▼Current rating

Make rating: 1A

Break rating: 1A

Continuous: 0.6A

▼Contact rating

30VA

▼Operating pressure

Stabilization: 3/4* full scale

Fluctuation: 2/3* full scale

Short time: 1* full scale

▼Other requests (Option)

Third party notarized

documents

Inspection report (issued by

Re-Atlantis)

Tag

Customized dial face

(scale, color, etc.)

Dry Type Threaded Diaphragm Micro Pressure Gauge with Electrical Contacts

Model: DDS1160 (S)+ECM Introduction

DDS1160 (S)+ECM dry type threaded diaphragm micro pressure gauge with electrical contact adopts diaphragm as pressure sensor with various material selection. DDS1160 (S)+ECM is design for gas and liquid micro pressure measurement, also applicable on corrosive and viscous media. Pressure gauge with oil-filling is applicable for high-vibration environment.

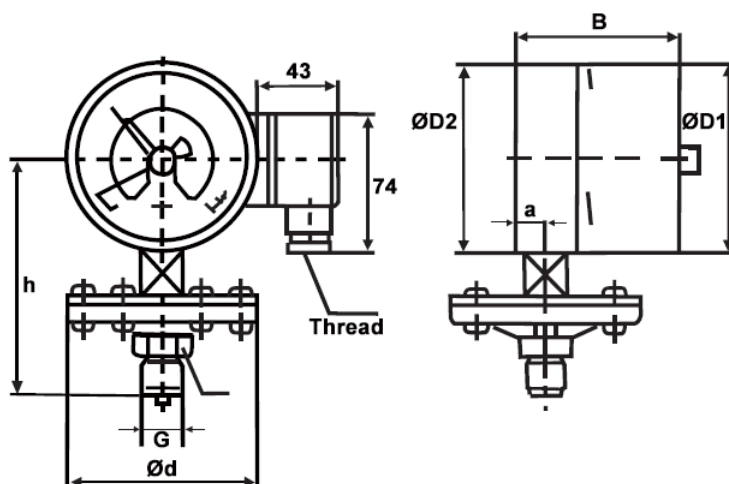


Due to the variety of customization, the picture is only for reference, please confirm the actual item with our sales. (If there is any change on specification, please take the latest version as standard.)

Features

- OEM service
- Specially design for micro pressure measurement, minimum measurable pressure: 4kPa
- Oil fillable pressure gauge, ensuring properly work on high vibration environment
- All stainless steel design with various material selection
- Durable design enables longer service life
- Up to two sets switch contact
- Small magnets have been installed around switch to prevent frequently switch on/off

Dimension



Size	Ød	B	ØD1	ØD2	G	h	SW
4"	160	88	101	99	as requested thread	135	27
6"	160	90	161	159	as requested thread	165	27

Switch functions table

(1) Single contact

Wiring diagram	Order No.	Contact points	Contact function	Clockwise pointer motion illustration
	1a	1	Contact makes when pointer reaches set point (NO-normally open)	
	1b		Contact breaks when pointer reaches set point (NO-normally closed)	
	S1		SPDT: 1 contact breaks and 1 contact makes when pointer reaches set point (change over)	

(2) Double contacts

	2a	2	1 st and 2 nd contact make when pointer reaches set point (NO-normally open x2)	
	1a1b		1 st contact makes 2 nd contact breaks when pointer reaches set point (NO+NC-normally open and closed)	
	1b1a		1 st contact breaks 2 nd contact makes when pointer reaches set point (NC+NO-normally closed and open)	
	2b		1 st and 2 nd contact break when pointer reaches set point (NC-normally closed x2)	
	S2		Two sets SPDT	

How to order

DDS1160 (S) +ECM		Dry Diaphragm Seal Micro Pressure Gauge with Electrical Contacts						
Code	Type							
D	Standard							
I	Vibration-proof (Insulation oil filling in pressure gauge)							
Code	Size							
4	4"							
6	6"							
Code	Pressure connection size							
2	1/4"							
3	3/8"							
4	1/2"							
O	Others (please specify)							
Code	Pressure connection type							
P	BSPT							
N	NPT							
F	PF							
O	Others (please specify)							
Code	Pressure range							
Custom	-100 to 4kPa...0...4 to 2500kPa							
Code	Electrical contact type							
1a	Refer to switch functions table and select corresponding order number							
Code	Diaphragm housing material							
A	SS304							
B	SS316							
C	SS316L							
O	Others (please specify)							
DDS1160 (S) +ECM	D	4	2	N	0~4kPa	1a	B	Order example: DDS1160 (S)+ECM-D-4-2-N-(0~4kPa)-1a-B