

## Main Specifications

## ▼Flow range

Min

Water : 0.01, L/min

Air : 0.1, NL/min

Max

Water : 300, L/min

Air : 5000, NL/min

## ▼Tube material

Glass tube / PC

## ▼Mounting type

Direct mounting

## ▼Seal material

Neoprene / Viton / Silicon

## ▼Connection size

1/4" ~1-1/4"

## ▼Connection type

PT / NPT (Female)

## ▼Applicable fluid

Clean fluid and fluid with low viscosity

## ▼Temperature influence

Calibration temperature as standard, environment changes per 4°C, 0.25% error increases

## ▼Max. operating pressure

Glass tube 6kg/cm<sup>2</sup>PC tube 10kg/cm<sup>2</sup>

## ▼Protection

IP54

## Other Specifications

## ▼Housing

SS304 / SS316 / CS / PVC / PP

## ▼Protection tube

SS304 / SS316 / C.S (Standard)

/ Acrylic

## ▼Float

SS304 / SS316 / Teflon / PVC

/ PP / Nylon

## ▼Accuracy

Water : ±3% F.S.

Air : ±4% F.S.

## Variable Area Flow Indicator

### Model : ATP Series

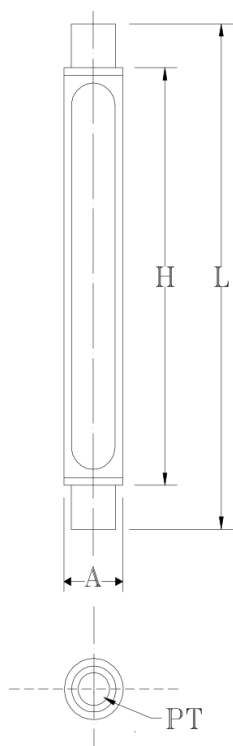


Due to the variety of customization, the picture is only for reference, please confirm the actual item with our sales. (If there is any change on specification, please take the latest version as standard.)

## Features

- Measure fluids and gases easily and accurately
- High stability
- Low cost

## Dimension



Size	A	H	L	PT
6	34	165	200	1/4"
10	34	165	200	1/4"
15	42	190	230	1/2"
18	48	190	230	1/2"
20	48	240	280	3/4"
25	60	240	280	1"
32	75	240	280	1-1/4"
40	90	240	280	1-1/2"

## Flow of Fluid

Size	Water (Max.) L/min			
6	0.01-0.1	0.01-0.15	0.02-0.2	0.03-0.3
10	0.03-0.3	0.05-0.5	0.08-0.8	0.1-1.0
15	0.1-1.0	0.2-2.0	0.3-3.0	0.4-4.0
18	0.5-5.0	0.6-6.0	0.8-8.0	1-10
20	0.5-5.0	1-10	1.5-15	2-20
25	2-20	3-30	4-40	5-50
32	4-40	5-50	8-80	10-100
40	10-100	15-150	25-250	30-300

## Flow of Air

Size	Air (Max.) NL/min			
6	0.1-1.0	0.2-2.0	0.3-3.0	0.5-5.0
10	0.5-5.0	1-10	1-15	2-20
15	3-30	5-50	6-60	10-100
18	10-100	15-150	20-200	25-250
20	20-200	25-250	30-300	40-400
25	50-500	100-1000	80-800	120-1200
32	150-1500	200-2000	250-2500	300-3000
40	250-2500	300-3000	350-3500	400-4000

## How to Order

<u>ATP</u> 	<u>20</u> 		<u>A</u> 		<u>1</u> 
Model	Size	code	Housing	code	Tube
ATP	6	A	Stainless Steel 304	1	Glass
	10	B	Stainless Steel 316	2	PC
	15	C	C.S		
	18	D	PVC.		
	20	E	PP.		
	32	F	PVDF		

	<u>N</u> 		<u>E</u> 		<u>C</u> 
code	Seal	code	Float	code	Protection Tube
N	Neoprene	A	Stainless Steel 304	A	Stainless Steel 304
V	Viton	B	Stainless Steel 316	B	Stainless Steel 316
S	Silicon	C	Teflon	C	C.S (Standard)
		D	PVC	D	Acrylic
		E	PP		
		F	Nylon		

For Example: ATP-20-A-1-N-E-C