

Main Specifications	Other Specifications
<p>▼Type General: AT530-7D Narrow dead band: AT530-7DK</p> <p>▼Pressure connection Material: stainless steel Thread spec.: G1/2"</p> <p>▼Adjustable set point range 0...3MPa For detail please refer to adjustable set point range table</p> <p>▼Dead band Fixed/Narrow fixed dead band For detail please refer to adjustable set point range table</p> <p>▼Applicable fluid Corrosive media that compatible with stainless steel</p> <p>▼Ambient temperature -30°C to +50°C</p> <p>▼Fluid temperature +120°C</p> <p>▼Media viscosity < 1 x 10⁻³m²/s</p> <p>▼Vibration-proof performance 40m/s²</p> <p>▼Protection level IP65</p>	<p>▼Installation Lower mount</p> <p>▼Case Die casting aluminum</p> <p>▼Measuring elements Bellow Material: SS316L</p> <p>▼Switch type SPDT micro switch</p> <p>▼Switching frequency 10/min</p> <p>▼Max operating pressure 2 / 3 / 7MPa (Vary from set point range)</p> <p>▼Repeatability ≤1%</p> <p>▼Contact rating AC 220V 6A (resistive load)</p> <p>▼Service life 1,000,000 times</p> <p>▼Other requests (Option) Third party notarized document Inspection report (issued by Re-Atlantis) Tag Pressure connection material: SS316L</p>

Mechanical Differential Pressure Switch

Model: AT530-7 Series

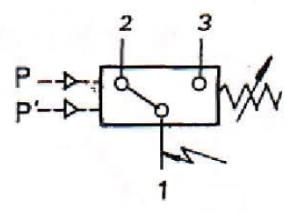
Introduction

AT530-7 Series pressure switch adopt SS316L bellow pressure sensor, which is suitable for corrosive media differential pressure monitor and control. Adjustable set point range 0...3MPa.



Due to the variety of customization, the picture is only for reference, please confirm the actual item with our sales. (If there is any change on specification, please take the latest version as standard.)

SPDT micro switch working principle



Terminal 1-3:
Close circuit when differential pressure is increased to setting differential pressure value

Terminal 1-2:
Open circuit when differential pressure is increased to setting differential pressure value

Features

- OEM service
- High switching frequency in low pressure range
- Adopts SS316L diaphragm, encased with SS304 housing
- Set point field adjustment, adjustable range 0...2.5MPa
- Fixed/adjustable/narrow fixed dead band types are available for wide applications
- Protection level IP65
- Explosion-proof type available (option)

Adjustable Set Point Range (Fixed Dead Band) Table

Model	Adjustable set point range (MPa)	Dead band		Operating pressure range* (MPa)	Max. operating pressure** (MPa)	Switching frequency per minute	Dimension No.	Weight (kg)	Order No.
		Lower limit (MPa)	Upper limit (MPa)						
AT530-7D	0.02...0.1	0.025	0.04	0.05 to 1.6	2	10	01	1.1	0819111
	0.02...0.16	0.025	0.04						0819211
	0.025...0.25	0.03	0.05						0819311
	0.03...0.4	0.03	0.06						0819411
	0.05...0.6	0.06	0.1	0.1 to 2.5	3		02	1.05	0819511
	0.05...1	0.07	0.12						0819611
	0.05...1.6	0.08	0.14						0819711
0.1...3	0.08	0.2	0.4 to 6.3	7	0819715				

Adjustable Set Point Range (Fixed Narrow Dead Band) Table

Model	Adjustable set point range (MPa)	Dead band		Operating pressure range* (MPa)	Max. operating pressure** (MPa)	Switching frequency per minute	Dimension No.	Weight (kg)	Order No.
		Lower limit (MPa)	Upper limit (MPa)						
AT530-7DK	0.02...0.1	0.01	0.02	0.05 to 1.6	2	10	01	1.1	0819113
	0.02...0.16	0.01	0.02						0819213
	0.025...0.25	0.012	0.025						0819313
	0.03...0.4	0.012	0.03						0819413
	0.05...0.6	0.025	0.05	0.1 to 2.5	3		02	1.05	0819513
	0.05...1	0.03	0.06						0819613
	0.05...1.6	0.04	0.06						0819713
0.1...3	0.05	0.15	0.4 to 6.3	7	0819813				

Note:

*: For high pressure side only

** : For both high and low pressure connection, operating pressure peak value cannot over maximum operating pressure value even in short-time measurement.

How to order

AT530-7		Mechanical Differential Pressure Switch							
	Code	Type							
	D	AT530-7D (General)							
	DK	AT530-7DK (Narrow dead band)							
		Code	Set point range and dead band						
		0819111	Please refer to adjustable set point range (fixed/narrow fixed dead band) table and select corresponding order code						
			Code	Pressure connection					
			4G	G1/2"					
			O	Others (please specify)					
			Code	Switch type					
			P	Micro switch SPDT					
		O	Others (please specify)						
AT530-7	D	0819111	4G	P	Order example: AT530-7-D-0819111-4G-P				