

Main Specifications

▼ Pressure connection

Material: Stainless steel

Thread spec.: G1/4"

▼ Adjustable set point range

0...0.2~25kPa

For detail please refer to adjustable set point range table

▼ Dead band

Fixed dead band

For detail please refer to adjustable set point range table

▼ Applicable fluid

Neutral gas and liquid

▼ Ambient temperature

-10°C to +55°C

▼ Fluid temperature

+90°C

▼ Media viscosity

$< 1 \times 10^{-3} \text{m}^2/\text{S}$

▼ Vibration-proof performance

$10\text{m}/\text{s}^2$

▼ Protection level

IP54

Other Specifications

▼ Installation

Lower mount

▼ Housing

Die casting aluminum

▼ Measuring elements

Diaphragm

Diaphragm housing material▼

Die casting aluminum

Diaphragm body material▼

NBR

▼ Switch type

SPDT micro switch

▼ Switching frequency

10/min

▼ Max. operating pressure

160kPa

▼ Repeatability

$\leq 1\%$

▼ Contact rating

$V_{\text{max}} = 380\text{VAC}$, $I_{\text{max}} = 6\text{A}$

$P_{\text{max}} = 600\text{VA}$

▼ Service life

1,000,000 cycles (200 VAC /6A)

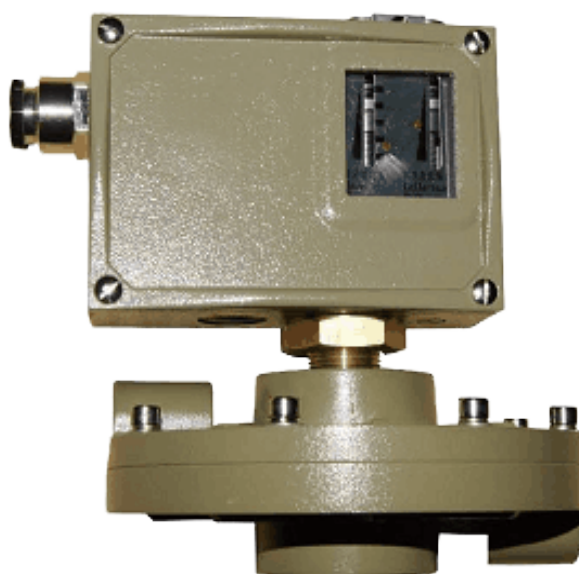
Mechanical Micro Differential Pressure Switch

Model: AT520-7DM

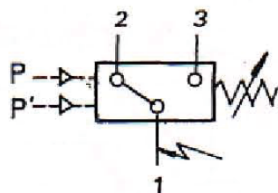
Introduction

AT520-7DM micro differential pressure switch adopts NBR diaphragms as pressure sensors, which is suitable for neutral gas and liquid micro differential pressure control and monitor.

Adjustable set point range 0...0.2 to 25kPa.



SPDT micro switch working principle



Terminal 1-3:

Close circuit when differential pressure is increased to setting differential pressure value

Terminal 1-2:

Open circuit when differential pressure is increased to setting differential pressure value



Due to the variety of customization, the picture is only for reference, please confirm the actual item with our sales. (If there is any change on specification, please take the latest version as standard.)

Features

- OEM service
- Suitable for micro differential pressure control
- NBR diaphragm adopted
- Three-diaphragm structure design
- Set point field adjustment, adjustable range 0...0.2 to 25kPa
- Explosion-proof type available (option)

Adjustable Set Point Range (Fixed Dead Band) Table

Model	Adjustable set point range (kPa)	Dead band		Maximum operating pressure* (kPa)	Switching frequency per minute	Pressure connection	Weight (kg)	Order No.
		Lower limit (kPa)	Upper limit (kPa)					
AT520-7DM	0.2...2.5	0.15	0.25	160	10	G1/4"	1.5	0818300
	0.6...6	0.3	0.4					0818500
	1.6...16	0.3	0.6					0818700
	2.5...25	0.3	0.7					0818800

*: Operating pressure peak value cannot over maximum operating pressure value even in short-time measurement.

How to order

AT520-7DM		Mechanical Micro Differential Pressure Switch		
Code		Set point range and dead band		
0818300		Please refer to adjustable set point range table and select corresponding order code		
Code		Pressure connection		
2G		G1/4"		
O		Others (please specify)		
Code		Switch type		
P		Micro switch SDPT		
O		Others (please specify)		
Code		Other requests		
/A		Third party notarized document		
/B		Inspection report (issued by Re-Atlantis)		
/C		Tag		
AT520-7DM	0818300	2G	P	Order example: AT520-7DM-0818300-2G-P