

Main Specifications

▼ Pressure connection

Material: SS304 / SS316
Thread spec.: G1/2" (F)
Other thread specification are available upon request

▼ Adjustable set point range

For detail please refer to adjustable set point range

▼ Dead band

Fixed/Adjustable dead band

For detail please refer to adjustable set point range

▼ Applicable fluid

Liquid and gas that compatible with pressure connection

▼ Ambient temperature

-40°C to 50°C

▼ Media temperature

0~120°C

▼ Media viscosity

$< 1 \times 10^{-3} \text{m}^2/\text{s}$

▼ Vibration resistance

Max. 20m/s²

▼ Protection level

IP65

▼ Explosion-proof level

Exde II CT4~T6

Other Specifications

▼ Installation

Bottom mount

▼ Case material

Die casting aluminum

▼ Measuring elements

Bellow

▼ Switch type

SPDT micro switch

▼ Switching frequency

20 times/min

▼ Max. operating pressure

1 / 2 / 5 / 8.5MPa
(Based on adjustable set point range)

▼ Repeatability

≤1%

▼ Contact rating

DC250V, 0.25A
(resistive load, @60Wmax)

AC250V, 5A

(resistive load, @1250Wmax)

▼ Service life

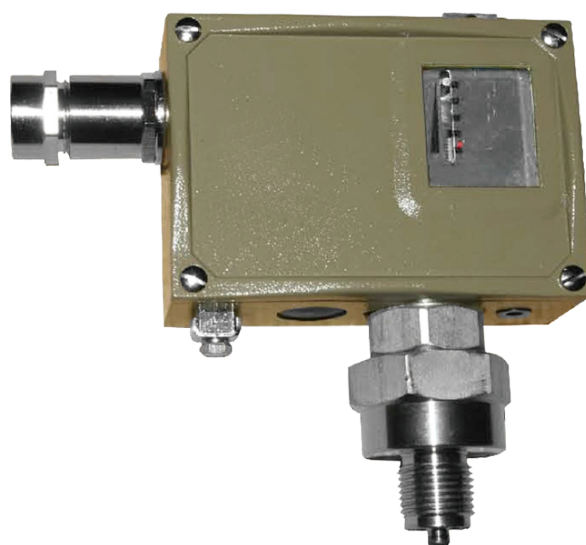
2,000,000 cycles

Explosion-proof Mechanical Pressure Switch

Model: AT511-7DEx

Introduction

AT511-7DEx explosion-proof pressure switch adopts SS316L bellow/diaphragm as measuring elements, which is suitable for corrosive gas and liquid measurement.

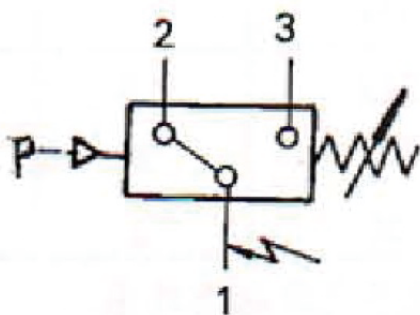


Due to the variety of customization, the picture is only for reference, please confirm the actual item with our sales. (If there is any change on specification, please take the latest version as standard.)

Features

- OEM service
- Explosion-proof pressure switch
- Adjustable set point range -0.1 to 6.3MPa
- Suitable for using in corrosive media
- Fixed / adjustable dead band types are available for wide applications
- Protection level IP65

SPDT micro switch working principle



Terminal 1-3:

Close circuit when pressure is increased to setting pressure value

Terminal 1-2:

Open circuit when pressure is increased to setting pressure value

Adjustable Set Point Range (Fixed Dead Band) Table

Model	Adjustable set point range (MPa)	Dead band		Maximum operating pressure* (MPa)	Switching frequency per min	Sensor material		Dimension No.	Weight (kg)	Order No.
		Lower limit (MPa)	Upper limit (MPa)			Case	Diaphragm			
AT511-7DEx	-0.1...0	0.006	0.007	1	20	All wetted part adopts SS316L, the others adopts SS321		04	1	0850181
	-0.1...0.1	0.007	0.008							0850281
	-0.1...0.16	0.008	0.009							0850381
	-0.1...0.25	0.009	0.012							0850481
	0...0.1	0.007	0.008	1				04	1	0851181
	0...0.16	0.008	0.009							0851281
	0.01...0.25	0.009	0.01							0851381
	0.02...0.4	0.03	0.03	2				05	0.85	0851481
	0.03...0.6	0.03	0.035							0851581
	0.03...1	0.03	0.04							0851681
	0.05...1.6	0.07	0.08	5				06	0.9	0851781
	0.05...2.5	0.07	0.09							0851881
0.3...6.3	0.1	0.2	8.5	06	0.9	0851981				

Adjustable Set Point Range (Adjustable Dead Band) Table

Model	Adjustable set point range (MPa)	Dead band		Maximum operating pressure* (MPa)	Switching frequency per min	Sensor material		Dimension No.	Weight (kg)	Order No.
		Lower limit (MPa)	Upper limit (MPa)			Case	Diaphragm			
AT511-7DEx	-0.1...0	0.018...0.08	0.019...0.08	1	20	All wetted part adopts SS316L, the others adopts SS321		04	1.05	0840181
	-0.1...0.1	0.019...0.1	0.021...0.1							0840281
	-0.1...0.16	0.02...0.2	0.022...0.2							0840381
	-0.1...0.25	0.022...0.25	0.024...0.025							0840481
	0...0.1	0.015...0.08	0.016...0.08	1				04	1.05	0841181
	0...0.16	0.018...0.1	0.02...0.1							0841281
	0.01...0.25	0.02...0.2	0.024...0.25							0841381
	0.02...0.4	0.08...0.25	0.08...0.25	2				05	0.9	0841481
	0.03...0.6	0.08...0.5	0.09...0.5							0841581
	0.03...1	0.09...0.8	0.1...0.8							0841681
	0.05...1.6	0.17...1.2	0.19...1.2	5				06	0.95	0841781
	0.05...2.5	0.18...2	0.2...2							0841881
0.3...6.3	0.25...2	0.65...2	8.5	06	0.95	0841981				

Note:

*: Operating pressure peak value cannot over maximum operating pressure value even in short-time measurement.

How to order

AT511-7DEx		Explosion-proof Mechanical Pressure Switch			
Code		Material of pressure connection			
304		SS304			
316		SS316			
Code		Set point range and dead band			
0850181		Please refer to adjustable set point range (fixed/adjustable dead band) table and select corresponding order code			
Code		Pressure connection			
4G		G1/2"			
O		Others (please specify)			
Code		Switch type			
P		SDPT micro switch			
O		Others (please specify)			
Code		Other requests			
/A		Third party notarized document			
/B		Inspection report (issued by Re-Atlantis)			
/C		Tag			
/D		Measuring elements - SS316L diaphragm			
AT511-7DEx	304	0850181	4G	P	Order example: AT511-7DEx-304-0850181-4G-P