

Main Specifications

▼ **Type**
 Normal: AT511-7D
 Narrow dead band: AT511-7DK

▼ **Pressure connection**
 Material: Stainless steel
 Thread spec.: G1/2"

▼ **Adjustable set point range**
 -1...0 to 6.3MPa
 For detail please refer to adjustable set point range

▼ **Dead band**
 Fixed/Adjustable/Narrow fixed dead band
 For detail please refer to adjustable set point range

▼ **Applicable fluid**
 Corrosive liquid and gas that compatible with stainless steel

▼ **Ambient temperature**
 -40°C to +50°C

▼ **Media temperature**
 0°C to +120°C

▼ **Media viscosity**
 $< 1 \times 10^{-3} \text{m}^2/\text{s}$

▼ **Vibration-proof performance**
 AT500-7D: Max. 40m/s²
 AT500-7DK: Max. 20m/s²

▼ **Protection level**
 IP65

Other Specifications

▼ **Installation type**
 Bottom mount

▼ **Case**
 Die casting aluminum

▼ **Measuring elements**
 Bellow (standard) /
 Diaphragm (option)
 All wetted part adopts SS316L,
 the others adopts SS321

▼ **Switch type**
 SPDT micro switch

▼ **Switching frequency**
 20 times/min

▼ **Max operating pressure**
 1 / 2 / 5 / 8.5MPa
 (Vary from adjustable set point range)

▼ **Repeatability**
 ≤1%

▼ **Contact rating**
 AC220V, 6A (resistive load)

▼ **Service life**
 2,000,000 cycles

**Mechanical Pressure Switch
 (General Application Type)
 Model: AT511-7 Series**

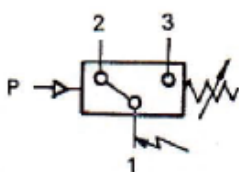
Introduction

AT511-7D/7DK pressure switch adopts SS316L bellow/diaphragm as measuring elements, which is suitable for corrosive gas and liquid measurement.



Due to the variety of customization, the picture is only for reference, please confirm the actual item with our sales. (If there is any change on specification, please take the latest version as standard.)

SPDT micro switch working principle



Terminal 1-3:
 Close circuit when pressure is increased to setting pressure value

Terminal 1-2:
 Open circuit when pressure is increased to setting pressure value

Features

- OEM service
- Measuring elements adopt SS316L bellow (diaphragm available upon request)
- Wide operating temperature: -40 to 50°C
- Adjustable set point range -0.1 to 6.3MPa
- Suitable for using in corrosive media
- Fixed/adjustable/narrow fixed dead band types are available for wide applications
- Protection level IP65
- Explosion-proof type available (option)

Adjustable Set Point Range (Fixed Dead Band) Table

Model	Adjustable set point range (MPa)	Dead band		Maximum operating pressure* (MPa)	Switching frequency per min	Sensor material		Dimension No.	Weight (kg)	Order No.
		Lower limit (MPa)	Upper limit (MPa)			Sensor Case	Body			
AT511-7D	-0.1...0	0.006	0.007	1	20	All wetted part adopts SS316L, the others adopts SS321		01	1	0810111
	-0.1...0.1	0.007	0.008							0810211
	-0.1...0.16	0.008	0.009							0810311
	-0.1...0.25	0.009	0.012							0810411
	0...0.1	0.007	0.008	1				01	1	0811111
	0...0.16	0.008	0.009							0811211
	0.01...0.25	0.009	0.01							0811311
	0.02...0.4	0.03	0.03	2				02	0.85	0811411
	0.03...0.6	0.03	0.035							0811511
	0.03...1	0.03	0.04							0811611
	0.05...1.6	0.07	0.08	5				03	0.9	0811711
	0.05...2.5	0.07	0.09							0811811
0.3...6.3	0.1	0.2	8.5	03	0.9	0811911				

Adjustable Set Point Range (Adjustable Dead Band) Table

Model	Adjustable set point range (MPa)	Dead band		Maximum operating pressure* (MPa)	Switching frequency per min	Sensor material		Dimension No.	Weight (kg)	Order No.
		Lower limit (MPa)	Upper limit (MPa)			Sensor case	Body			
AT511-7D	-0.1...0	0.018...0.08	0.019...0.08	1	20	All wetted part adopts SS316L, the others adopts SS321		01	1.05	0800111
	-0.1...0.1	0.019...0.1	0.021...0.1							0800211
	-0.1...0.16	0.02...0.2	0.022...0.2							0800311
	-0.1...0.25	0.022...0.25	0.024...0.025							0800411
	0...0.1	0.015...0.08	0.016...0.08	1				01	1.05	0801111
	0...0.16	0.018...0.1	0.02...0.1							0801211
	0.01...0.25	0.02...0.2	0.024...0.25							0801311
	0.02...0.4	0.08...0.25	0.08...0.25	2				02	0.9	0801411
	0.03...0.6	0.08...0.5	0.09...0.5							0801511
	0.03...1	0.09...0.8	0.1...0.8							0801611
	0.05...1.6	0.17...1.2	0.19...1.2	5				03	0.95	0801711
	0.05...2.5	0.18...2	0.2...2							0801811
0.3...6.3	0.25...2	0.65...2	8.5	03	0.95	0801911				

Adjustable Set Point Range (Fixed, Narrow Dead Band) Table

Model	Adjustable set point range (MPa)	Dead band		Maximum operating pressure* (MPa)	Switching frequency per min	Sensor material		Dimension No.	Weight (kg)	Order No.
		Lower limit (MPa)	Upper limit (MPa)			Sensor Case	Body			
AT511-7DK	-0.1...0	0.003	0.0045	1	20	All wetted part adopts SS316L, the others adopts SS321		01	1	0810113
	-0.1...0.1	0.003	0.005							0810213
	-0.1...0.16	0.003	0.0065							0810313
	-0.1...0.25	0.0045	0.01							0810413
	0...0.1	0.003	0.0045	1				01	1	0811113
	0...0.16	0.003	0.006							0811213
	0.01...0.25	0.0045	0.007							0811313
	0.02...0.4	0.012	0.016	2				02	0.85	0811413
	0.03...0.6	0.015	0.02							0811513
	0.03...1	0.018	0.03							0811613
	0.05...1.6	0.03	0.05	5				03	0.9	0811713
	0.05...2.5	0.03	0.06							0811813
0.3...6.3	0.06	0.12	8.5	03	0.9	0811919				

Note:

*: Operating pressure peak value cannot over maximum operating pressure value even in short-time measurement.

How to order

AT511-7		Mechanical Pressure Switch (General Application Type)			
Code	Type				
D	AT511-7D (Normal type)				
DK	AT511-7DK (Narrow dead band type)				
	Code	Set point range and dead band			
	0810111	Please refer to adjustable set point range (fixed/adjustable/narrow dead band) table and select corresponding order code			
		Code	Pressure connection		
		4G	G1/2"		
		O	Others (please specify)		
			Code	Switch type	
			P	SDPT micro switch	
			O	Others (please specify)	
				Code	Other requests
				/A	Third party notarized document
				/B	Inspection report (issued by Re-Atlantis)
				/C	Tag
				/D	Measuring elements - SS316L diaphragm
AT511-7	D	0810111	4G	P	Order example: AT511-7D-0810111-4G-P