

Main Specifications

▼ Type

General: AT501-7D

Narrow dead band: AT501-7DK

▼ Pressure connection

Material: stainless steel

Thread spec.: G1/4"

▼ Adjustable set point range

0...2.5 MPa

For detail please refer to adjustable set point range table

▼ Dead band

Fixed/Adjustable/Narrow fixed dead band. For detail please refer to adjustable set point range table

▼ Applicable fluid

Neutral gas / liquid / corrosive media that compatible with stainless steel

▼ Ambient temperature

-20 to 40°C

▼ Fluid temperature

+120°C

▼ Vibration-proof performance

20m/s²

▼ Protection level

IP65

Other Specifications

▼ Installation type

Lower mount

▼ Case

Die casting aluminum

▼ Measuring elements

Diaphragm

Diaphragm housing material ▼

SS304

Diaphragm body material ▼

SS316L

▼ Switch type

SPDT micro switch

▼ Switching frequency

30/min

▼ Max operating pressure

0.05 / 1.5 / 4 / 5MPa

(Vary from selected set point range)

▼ Repeatability

≤1.5%

▼ Contact rating

AC220V, 6A (resistive load)

▼ Service life

2×10⁵ cycles

Mechanical Pressure Switch (Low Pressure Type)

Model: AT501-7 Series

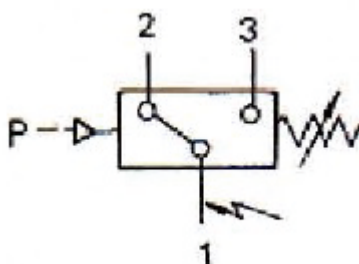
Introduction

AT501-7 Series pressure switch adopt SS316L diaphragm as pressure sensor, which can apply to corrosive media, neutral gas and liquid pressure monitor and control.

Adjustable set point range 0...2.5 MPa.



SPDT micro switch working principle



Terminal 1-3:

Close circuit when pressure is increased to setting pressure value

Terminal 1-2:

Open circuit when pressure is increased to setting pressure value



Due to the variety of customization, the picture is only for reference, please confirm the actual item with our sales. (If there is any change on specification, please take the latest version as standard.)

Features

- OEM service
- High switching frequency in low pressure range
- Adopts SS316L diaphragm, encased with SS304 housing
- Set point field adjustment, adjustable range 0...2.5MPa
- Fixed/adjustable/narrow fixed dead band types are available for wide applications
- Protection level IP65
- Explosion-proof type available (option)

Adjustable set point range (Fixed Dead Band) Table (1MPa = 1000kPa)

Model	Adjustable set point range (MPa)	Dead band		Maximum operating pressure* (MPa)	Switching frequency per minute	Pressure connection	Weight (kg)	Dimensions code	Order No.
		Lower limit (MPa)	Upper limit (MPa)						
AT501-7D	0.....0.0025	0.0003	0.0004	0.05	10	G1/4"	1.0	01	0815100
	0.....0.006	0.0004	0.0006						0815200
	0.....0.016	0.0004	0.0008						0815300
	0.....0.025	0.0004	0.0009						0815400
	0.005.....0.06	0.003	0.006	1.5	20		1.15	02	0815500
	0.005.....1	0.003	0.009						0815600
	0.005.....0.16	0.003	0.012						0815700
	0.005.....0.25	0.004	0.015						0815800
	0.03.....0.4	0.02	0.04	4	0.85		03	0813500	
	0.03.....0.6	0.03	0.05					0813600	
	0.05.....1	0.03	0.06					0813700	
	0.1.....1.6	0.04	0.12	5	0.85		03	0813800	
0.1.....2.5	0.04	0.15	0813900						

Adjustable set point range (Adjustable Dead Band) Table (1MPa = 1000kPa)

Model	Adjustable set point range (MPa)	Dead band		Maximum operating pressure* (MPa)	Switching frequency per minute	Pressure connection	Weight (kg)	Dimensions code	Order No.
		Lower limit (MPa)	Upper limit (MPa)						
AT501-7D	0.....0.0025	0.0008...0.0025	0.0011...0.0025	0.05	10	G1/4"	1.05	01	0805100
	0.....0.006	0.0009...0.004	0.0015...0.004						0805200
	0.....0.016	0.0011...0.012	0.0023...0.012						0805300
	0.....0.025	0.0011...0.02	0.0028...0.02						0805400
	0.005.....0.06	0.009...0.05	0.016...0.05	1.5	20		1.2	02	0805500
	0.005.....1	0.011...0.08	0.018...0.08						0805600
	0.005.....0.16	0.013...0.12	0.025...0.12						0805700
	0.005.....0.25	0.014...0.2	0.025...0.2						0805800
	0.03.....0.4	0.05...0.2	0.08...0.2	4	0.9		03	0803500	
	0.03.....0.6	0.06...0.4	0.1...0.4					0803600	
	0.05.....1	0.06...0.6	0.11...0.6					0803700	
	0.1.....1.6	0.12...1.2	0.25...1.2	5	0.9		03	0803800	
0.1.....2.5	0.12...2	0.33...2	0803900						

Adjustable set point range (Fixed, Narrow Dead Band) Table (1MPa = 1000kPa)

Model	Adjustable set point range (MPa)	Dead band		Maximum operating pressure* (MPa)	Switching frequency per minute	Pressure connection	Weight (kg)	Dimensions code	Order No.
		Lower limit (MPa)	Upper limit (MPa)						
AT501-7DK	0.....0.0025	0.00015	0.0002	0.05	10	G1/4"	1	01	0815107
	0.....0.006	0.00018	0.00045						0815207
	0.....0.016	0.0002	0.0005						0815307
	0.....0.025	0.00025	0.0006						0815407
	0.005.....0.06	0.002	0.004	1.5	20		1.15	02	0815507
	0.005.....0.1	0.002	0.006						0815607
	0.005.....0.16	0.0025	0.0075						0815707
	0.005.....0.25	0.0025	0.01						0815807
	0.03.....0.4	0.015	0.02	4	0.85		03	0813507	
	0.03.....0.6	0.015	0.02					0813607	
	0.05.....1	0.018	0.038					0813707	
	0.1.....1.6	0.02	0.08	5	0.85		03	0813807	
0.1.....2.5	0.02	0.1	0813907						

Note:

*: Operating pressure peak value cannot over maximum operating pressure value even in short-time measurement.

How to order

AT501-7		Mechanical Pressure Switch (Low Pressure Type)			
Code	Type				
D	AT501-7D (General)				
DK	AT501-7DK (Narrow dead band)				
Code	Set point range and dead band				
0815100	Please refer to adjustable set point range (fixed/adjustable/narrow fixed dead band) table and select corresponding order code				
Code	Pressure connection				
2G	G1/4"				
O	Others (please specify)				
Code	Switch type				
P	Micro switch SPDT				
O	Others (please specify)				
Code	Other requests				
/A	Third party notarized document				
/B	Inspection report (issued by Re-Atlantis)				
/C	Tag				
AT501-7	D	0815100	2G	P	Order example: AT501-7-D-0815100-2G-P