

Bimetal Thermometer - BTT & BTA series

- ▼ Case and Connection material: SS304
- ▼ Lens: Glass
- ▼ Stem material: SS304 <standard> , SS316 <option>
- ▼ Stem length: 63mm ~ 2032mm
- ▼ Stem diameter: Standard 6.35mm
- ▼ Working temperature range: -50°C ~ +600°C
- ▼ Accuracy: $\pm 1.5\%$ F.S. <standard> , $\pm 1.0\%$ F.S. <option>

Temperature Range (°C)
-40 ~ 40
-30 ~ 70
-10 ~ 50
-5 ~ 55
-5 ~ 50
0 ~ 50
0 ~ 55
0 ~ 100
0 ~ 120
0 ~ 150

Stem length (Include thread)
80 mm
100 mm
120 mm
150 mm

Note: The minimum length of stem
(thread length excluded) is:
For BTT: 40mm
For BTA: 60mm

When temperature range of dial face is 200°C-300°C,
the minimum length of stem can be shorter.
For BTT: 35mm
For BTA: 40mm

Rigid Back Stem Type	
Diameter	Thread spec.
1"	1/8"PT
1.5"	
2"	1/4"PT
2.5"	
3"	
4"	1/2"PT
5"	
6"	

Adjustable Angle Type	
Diameter	Thread spec.
3"	1/4"PT
4"	1/2"PT
5"	
6"	

※ The specifications listed above are standard thread size.

If you need special thread specification, please specify before order. (There is another model BTI (by bottom entry) for your choice)

※ The above-mentioned specifications can also fit for FT (expansion principle) , but thicker housing is required for FT.
3"/4"/5"/6" dial diameters are available.

**Rigid Back Stem Type
(Model: BTT)**



**Adjustable Angle Type
(Model: BTA)**



Thermometer Accessory

Thermowell

- ▼ Structure: Welded, all-in-one
- ▼ Material: Copper, SS304, SS316
- ▼ Specification: inner, 1/4", outer: 1/2"
inner: 1/2", outer: 1/2"
- ▼ Length (include male thread): 60mm, 80mm, 130mm
<Free size is available made-to-order, please specify before order>



All Stainless Steel Pressure Gauge – SUS-series (Φ1.5"~Φ10")

▼ Installation type: Bottom mount(A), Bottom mount with back flange(B), Back mount (Centric thread)(ADC), Back mount (Eccentric thread)(ADE), Back mount with front flange (Centric thread)(BDC), Back mount with front flange (Eccentric thread)(BDE), Back mount with U-Clamp (Centric thread)(UDC), Back mount with U-Clamp(Eccentric thread)(UDE), Back mount with front flange and U-Clamp (Centric thread)(UBDC), Back mount with front flange and U-Clamp (Eccentric thread)(UBDE)

▼ Applicable to: Liquid and gas that compatible with stainless steel

▼ Case: SS304

▼ Lens: PC<standard>, glass<option>, safety glass<option for 4"up diameter>

▼ Measuring element: SS316 Bourdon tube

▼ Connection: SS316 thread; thread size: 1/8", 1/4", 3/8", 1/2"; thread type: PT(BSPT), NPT, PF(BSP)

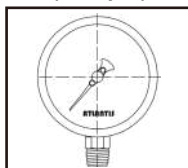
▼ Pressure range: 0~7kg/cm², 0~10kg/cm², 0~11kg/cm², 0~15kg/cm², 0~20kg/cm²
<Pressure range and unit are available made-to-order>

▼ Oil-filled in gauge: Glycerin, Silicone oil

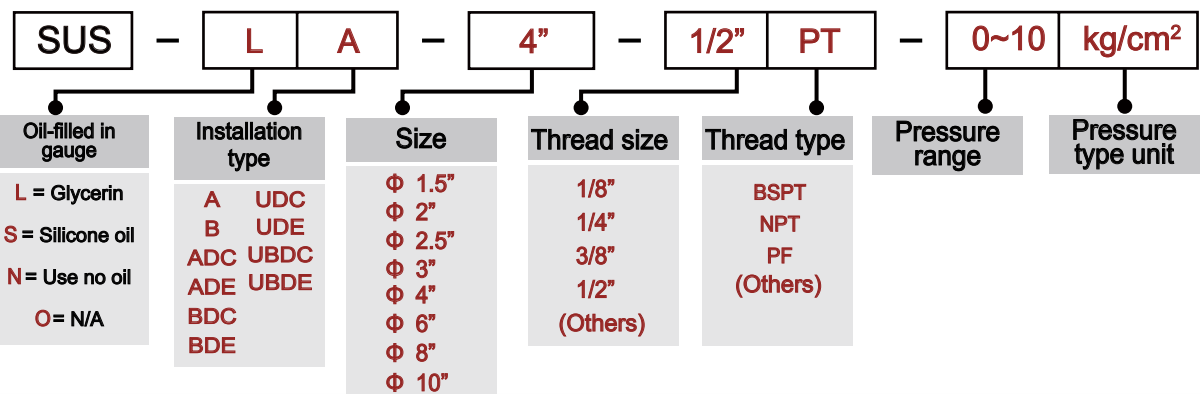
▼ Accuracy: ±2.0%F.S.(Φ1.5"~Φ2"), ±1.5%F.S.(Φ2"~Φ3"), ±1.0%F.S.(Φ3"~Φ10")



How to order (Sample)



Model: A
Type: Bottom
Size: 1.5", 2", 2.5", 3", 4", 6", 8", 10"



Stainless Steel Case Pressure Gauge SC-Series (Φ1.5" ~ Φ6")

▼ Installation type: Bottom mount(A), Bottom mount with back flange(B), Back mount (Centric thread)(ADC), Back mount (Eccentric thread)(ADE), Back mount with front flange (Centric thread)(BDC), Back mount with front flange(Eccentric thread)(BDE), Back mount with U-Clamp (Centric thread)(UDC), Back mount with U-Clamp(Eccentric thread)(UDE), Back mount with front flange and U-Clamp (Centric thread)(UBDC), Back mount with front flange and U-Clamp (Eccentric thread) (UBDE)

▼ Applicable to: Liquid and gas that compatible with copper alloy

▼ Case: SS304

▼ Lens: PC<standard>, glass<standard>, safety glass<option>

▼ Measuring elements: Copper Bourdon tube

▼ Connection: Copper thread; Thread size: 1/8", 1/4", 3/8", 1/2"; Thread type : BSPT, NPT, PF

▼ Pressure range: 0~5kg/cm², 0~7kg/cm², 0~10kg/cm², 0~11kg/cm²

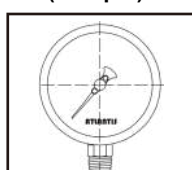
<Pressure range and unit are available made-to-order>

▼ Oil-filled in gauge: Glycerin, Silicone oil

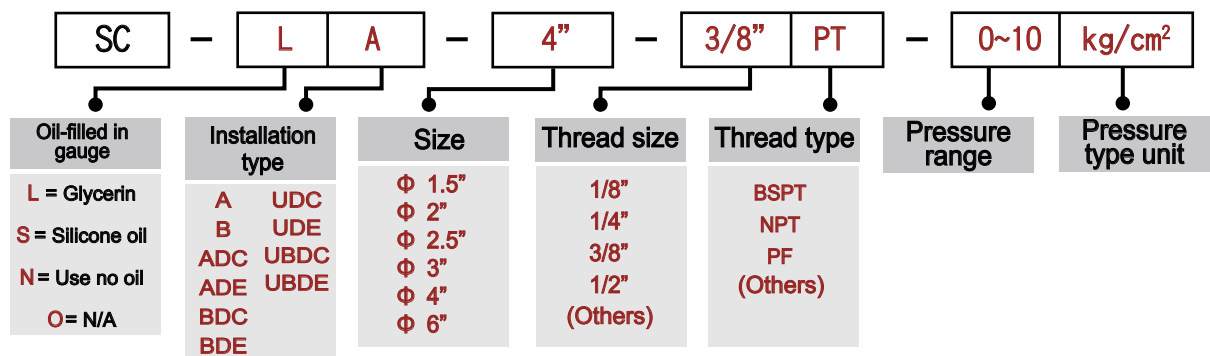
▼ Accuracy: ±2.0%F.S.(Φ1.5"~Φ2"), ±1.5%F.S.(Φ2.5"~Φ6")



How to order (Sample)



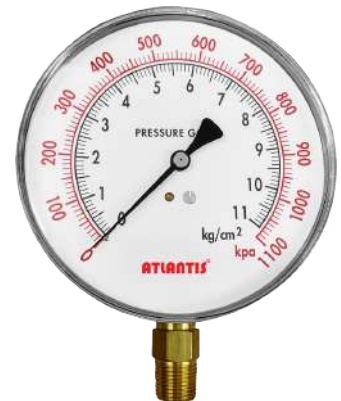
Model: A
Type: Bottom
Size: 1.5", 2", 2.5", 3", 4", 6"



Stainless Steel Case Pressure Gauge with Zero Adjustment – ZSC-A-4.5" Series

This special 4.5/5 "zero adjustable stainless steel pressure gauge with adjustable screws is suitable for general engineering and other occasions requiring on-site correction of the pointer.

- ▼ Applicable liquid or gas: Liquid and gas that compatible with copper alloy
- ▼ Diameter: 4.5" (Φ125mm)
- ▼ Case: SS304
- ▼ Measuring elements: Copper Bourdon tube
- ▼ Connection: Copper thread; standard size: 1/4"PT < standard > , 3/8"PT < option >
- ▼ Accuracy: $\pm 2.5\%$ F.S. < standard > , $\pm 1.6\%$ F.S. < option >
- ▼ Pressure range: 0~11kg/cm², 0~21kg/cm²
- < Other pressure range and unit are available made-to-order >

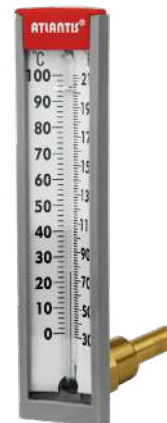


Industrial Glass Thermometer

6" / 6.5" Industrial Glass Thermometer

PGL6 industrial glass thermometer adopts liquid expansion as measuring elements. The glass tube is filled with organic liquid exclude mercury.

- ▼ Size: 6"
- ▼ Case: Reinforced plastic
- ▼ Lens: Glass
- ▼ Liquid-in-glass: Red organic liquid
- ▼ Stem connection: Copper; thread: 3/4"×16 (without thread)
- ▼ Thermowell material: Copper, SS304; thread: 1/2"PT; Length include thread: 48mm, 58mm
- ▼ Accuracy: $\pm 1.0\%$ F.S.



L-type
(Model : PGL6)

Temperature Range(°C)
-10 ~ 50
-5 ~ 55
0 ~ 100



Model : TGA9

9" Adjustable Angle Thermometer

TGA9 Adjustable angle industrial glass thermometer adopts liquid expansion as measuring elements, widely used in air conditioning, piping and other industrial temperature measurement.

- ▼ Size: 9"
- ▼ Case: Reinforced plastic, aluminum with black enamel
- ▼ Lens: Glass
- ▼ Liquid-in-glass: Red organic liquid
- ▼ Stem connection: Copper alloy
- ▼ Thread: 1-1/4"-18UNEF<3/4" thermowell is optional>
- ▼ Temperature range: Min. -40°C, Max. +400°C
- ▼ Accuracy: $\pm 1.0\%$ F.S.

Temperature Range(°C)
-40 ~ 40
-15 ~ 50
0 ~ 50
0 ~ 55
0 ~ 65
0 ~ 100
0 ~ 115
0 ~ 150

Flow Switch RHFS

RHFS series Liquid Switches are Single-Pole-Double-Throw (SPDT) flow switches that are used in liquid pipe lines which carrying water, ethylene glycol, or other liquid not to classify as dangerous liquid. They can be wired to energize or de-energize power from the same facility when liquid flow either over or below the set flow.

▼ Type: Type E (Economic), Type SC (Stainless steel case), Type SUS (All stainless steel)

▼ Material: case: Red ABS; connection: brass, SS304

▼ Operating voltage: 120, 208, 240, 227VAC

▼ Max. operating pressure: 10bar(150psi)

▼ Switch Type: SPDT*1

▼ Thread Type: 1/2", 3/4", 1"NPT



Thermocouple TC

▼ Type: Weather resistance type

▼ Thread size: Material: SS304, 1/2"; Thread type: BSPT, NPT, PF

▼ Electrical connection: 1/2"NPT, M20*1.5

▼ Stem: Material: SS304; Outer diameter: 1/4"; Length: 50 ~ 2000mm

▼ Temperature range: Min. 0°C, max. 1800°C

▼ Service condition: the depth of insertion at least 8 times of the outer diameter of thermowell

▼ Protection level: IP 65



Thermocouple temperature sensing difference

Type	Properties
Ground	Thermocouple wiring directly connect to the bottom parts. Main features – fast response, working smoothly in high pressure environments. Disadvantage - low anti-interference performance
Non-ground	Thermocouple wiring is absolutely insulate against bottom parts. Response speed is slower than ground type. Longer service life. High anti-interference performance
Open wiring	Thermocouple with open wiring. Fastest response speed that can detect slight temperature change. Disadvantage - wiring without protection reduces service life.

Pressure Gauge Accessory

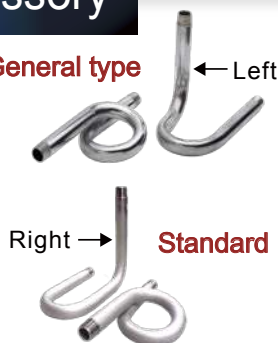
◆ Syphon

▼ Material: Steel plated with zinc, SS304, SS316

▼ Type: Standard, general U type (90°), Standard, general O type (180°)

▼ Connection: 1/4", 3/8", 1/2"PT male or female thread < Special specs. are available made-to-order >

General type



◆ Cock (Ball Valve)

▼ Material: Brass with plating, SS304, SS316

▼ Connection: 1/4", 3/8", 1/2"PT female thread
< Special specs. are available made-to-order >



*This catalogue is subject to change without notice.
For more information please check our website

ATLANTIS® Gauge®

Re-atlantis enterprise co., ltd.
B2B Industrial co., ltd.

TEL: +886-2-28203405

TEL: +886-2-28235699

FAX: +886-2-28203406

FAX: +886-2-28270646

Rev3.2
(201909)

